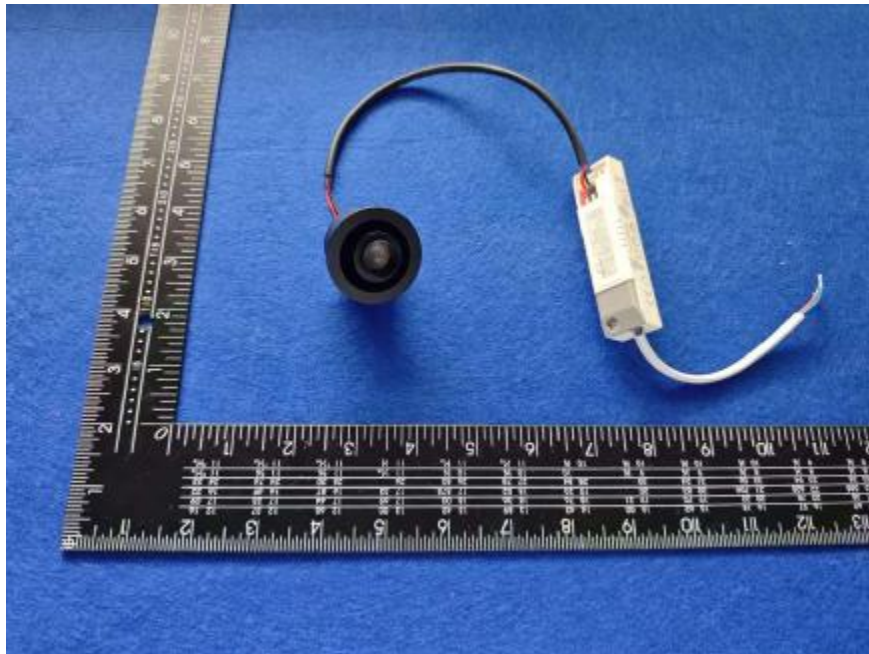


Luminaire Photograph



Light Output Ratio:	100.0%	
Luminaire Power:	3.051 W	
SHR Nominal:	0.00	Calculated using the TM5
SHR Maximum:	0.30	fine grid method.

C Range: 0 - 360DEG
C Interval: 30.0DEG
Test Speed: HIGH
Temperature: 25.3 °C
Operators: zoe
Test Date: 2025-7-15

Range: 0 - 180DEG
Interval: 1.0DEG
Test System: EVERFINE GO-SPEX500_V1 SYSTEM V2.00.461
Humidity: 65.0%
Test Distance: 3.160m [K=1.0000]
Remarks: LAMP: BXRE-30G-11H-3A1-00-0-0 Ra: 90
LENS: HLTJ00039 30R
DRIVER: LS-3-700 SIE 700mA
30minutes warm-up

LUMINOUS INTENSITY DISTRIBUTION DIAGRAM

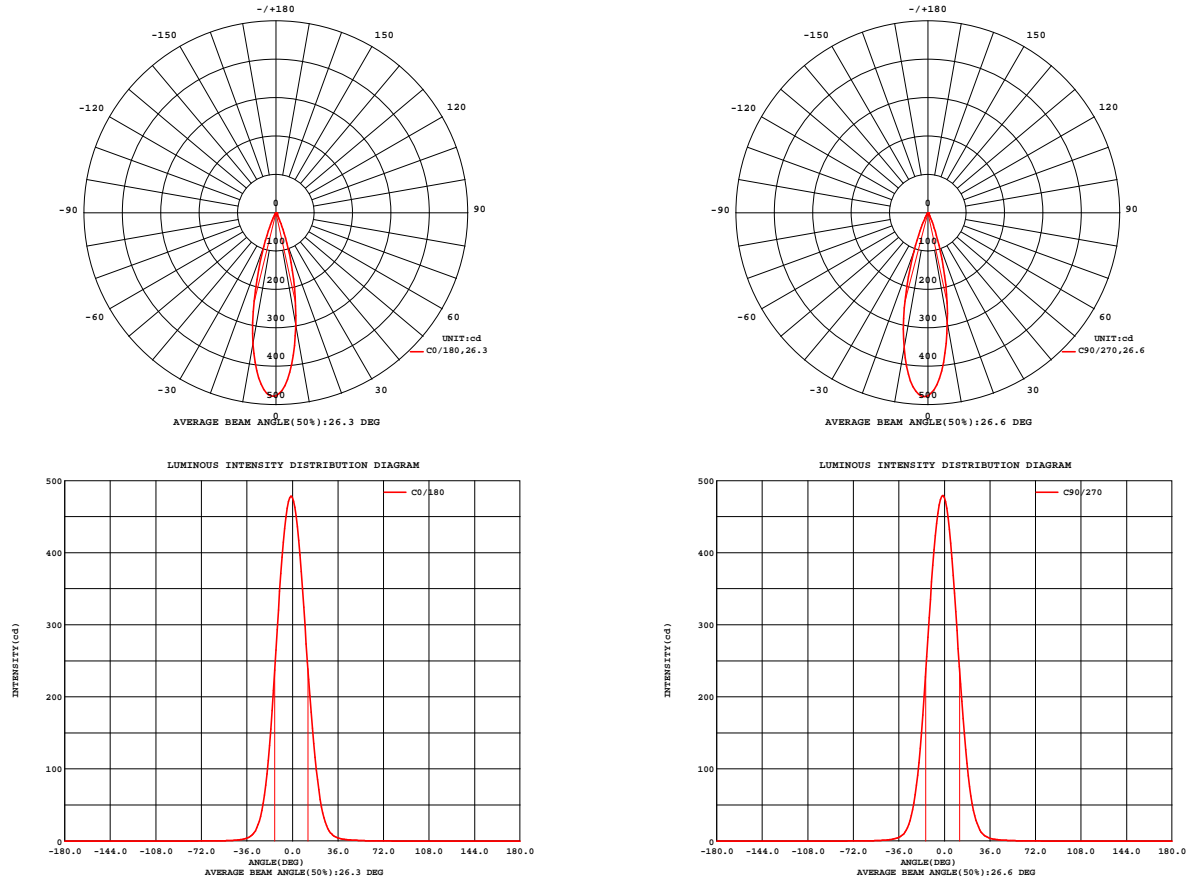


Fig. C0/C180

Fig. C90/C270

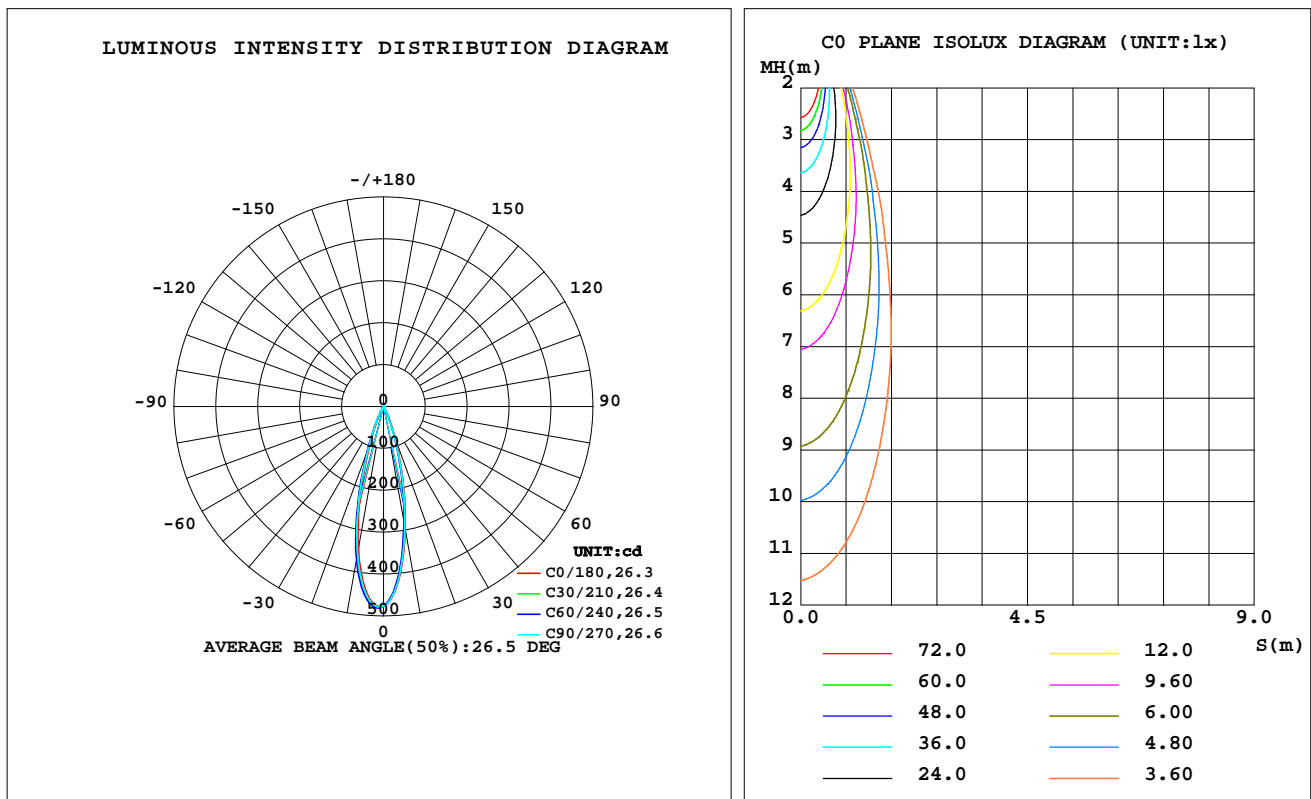
C Range: 0 - 360DEG
C Interval: 30.0DEG
Test Speed: HIGH
Temperature: 25.3 °C
Operators: zoe
Test Date: 2025-7-15

Range: 0 - 180DEG
Interval: 1.0DEG
Test System: EVERFINE GO-SPEX500_V1 SYSTEM V2.00.461
Humidity: 65.0%
Test Distance: 3.160m [K=1.0000]
Remarks: LAMP: BXRE-30G-11H-3A1-00-0-0 Ra: 90
LENS: HLTJ00039 30R
DRIVER: LS-3-700 SIE 700mA
30minutes warm-up

LUMINAIRE PHOTOMETRIC TEST REPORT

Test:U:220.15V I:0.0234A P:3.0512W PF:0.5846 Freq:49.99Hz Lamp Flux:112.449x1 lm		
NAME: 2368.100Z	TYPE:	WEIGHT:
SPEC.: 3000K	DIM.:	SERIAL No.: 2507150470
MFR.: RISE	SUR.: 0.00011304m2	Shielding Angle:

DATA OF LAMP		PHOTOMETRIC DATA Eff: 36.85 lm/W			
MODEL	Bridgelux	Imax(cd)	481.0	S/MH(C0/180)	0.45
NOMINAL POWER(W)	3	LOR(%)	100.0	S/MH(C90/270)	0.47
RATED VOLTAGE(V)	220	TOTAL FLUX(lm)	112.45	UP,DN(C0-180)	0.0,45.4
NOMINAL FLUX(lm)	112.449	CIE CLASS	DIRECT	UP,DN(C180-360)	0.0,54.6
LAMPS INSIDE	1	up(%)	0.0	CIBSE SHR NOM	0.00
TEST VOLTAGE(V)	220	down(%)	100.0	CIBSE SHR MAX	0.30



C Range: 0 - 360DEG
C Interval: 30.0DEG
Test Speed: HIGH
Temperature:25.3℃
Operators:zoe
Test Date:2025-7-15

Range: 0 - 180DEG
Interval: 1.0DEG
Test System:EVERFINE GO-SPEX500_V1 SYSTEM V2.00.461
Humidity:65.0%
Test Distance:3.160m [K=1.0000]
Remarks: LAMP:BXRE-30G-11H-3A1-00-0-0 Ra:90
LENS:HLTJ00039 30R
DRIVER: LS-3-700 SIE 700mA
30minutes warm-up

ZONAL FLUX DIAGRAM

ZONAL FLUX DIAGRAM:

	C0	C45	C90	C135	C180	C225	C270	C315		zone	total	%lum,lamp
10	298.6	285.1	292.1	309.3	346.4	367.1	359.4	326.1	0- 10	37.74	37.74	33.6,33.6
20	84.95	75.73	75.41	75.67	93.19	108.5	108.8	92.93	10- 20	52.45	90.19	80.2,80.2
30	11.49	10.66	10.30	9.832	11.65	14.84	15.02	12.31	20- 30	17.13	107.3	95.4,95.4
40	2.589	2.529	2.314	2.095	2.172	2.613	2.747	2.531	30- 40	3.512	110.8	98.6,98.6
50	1.036	0.9343	0.8360	0.6415	0.5700	0.7540	0.8481	0.9250	40- 50	1.100	111.9	99.5,99.5
60	0.3025	0.2893	0.2432	0.1477	0.1112	0.1336	0.1874	0.2592	50- 60	0.4397	112.4	99.9,99.9
70	0.0326	0.0354	0.0310	0.0195	0.0146	0.0125	0.0159	0.0235	60- 70	0.0747	112.4	100,100
80	0	0	0	0	0	0	0	0	70- 80	0.0059	112.4	100,100
90	0	0	0	0	0	0	0	0	80- 90	0	112.4	100,100
100	0	0	0	0	0	0	0	0	90-100	0	112.4	100,100
110	0	0	0	0	0	0	0	0	100-110	0	112.4	100,100
120	0	0	0	0	0	0	0	0	110-120	0	112.4	100,100
130	0	0	0	0	0	0	0	0	120-130	0	112.4	100,100
140	0	0	0	0	0	0	0	0	130-140	0	112.4	100,100
150	0	0	0	0	0	0	0	0	140-150	0	112.4	100,100
160	0	0	0	0	0	0	0	0	150-160	0	112.4	100,100
170	0	0	0	0	0	0	0	0	160-170	0	112.4	100,100
180	0	0	0	0	0	0	0	0	170-180	0	112.4	100,100
DEG	LUMINOUS INTENSITY:cd									UNIT:lm		

C Range: 0 - 360DEG
C Interval: 30.0DEG
Test Speed: HIGH
Temperature:25.3℃
Operators:zoe
Test Date:2025-7-15

Range: 0 - 180DEG
Interval: 1.0DEG
Test System:EVERFINE GO-SPEX500_V1 SYSTEM V2.00.461
Humidity:65.0%
Test Distance:3.160m [K=1.0000]
Remarks: LAMP:BXRE-30G-11H-3A1-00-0-0 Ra:90
LENS:HLTJ00039 30R
DRIVER: LS-3-700 SIE 700mA
30minutes warm-up

LUMINANCE LIMITATION CURVES

Test:U:220.15V I:0.0234A P:3.0512W PF:0.5846 Freq:49.99Hz
Lamp Flux:112.449x1 lm

NAME: 2368.100Z

TYPE:

WEIGHT:

SPEC.: 3000K

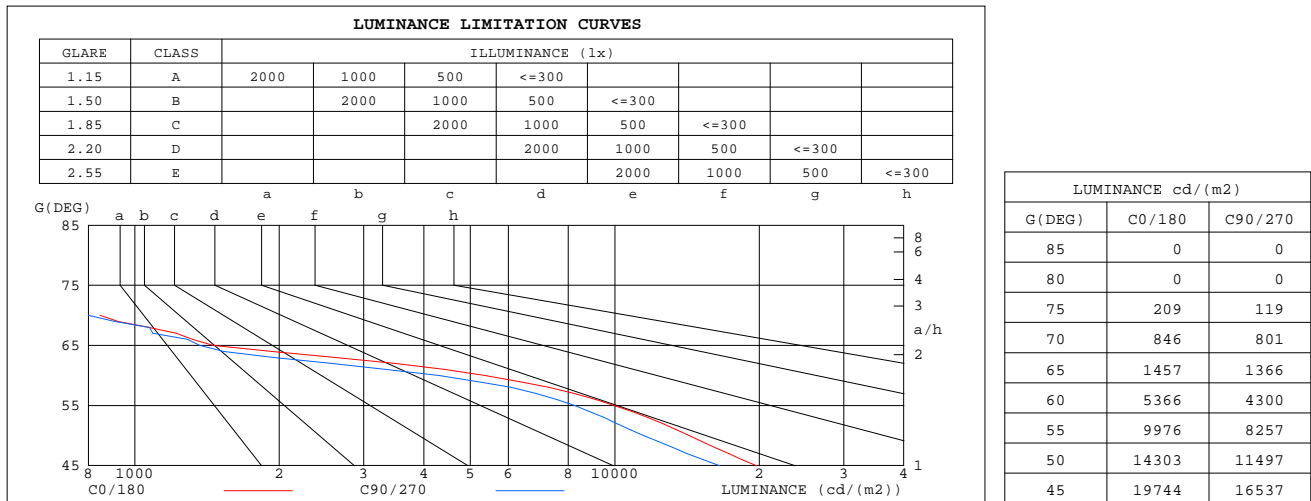
DIM.:

SERIAL No.: 2507150470

MFR.: RISE

SUR.: 0.00011304m2

Shielding Angle:



C Range: 0 - 360DEG
C Interval: 30.0DEG
Test Speed: HIGH
Temperature:25.3℃
Operators:zoe
Test Date:2025-7-15

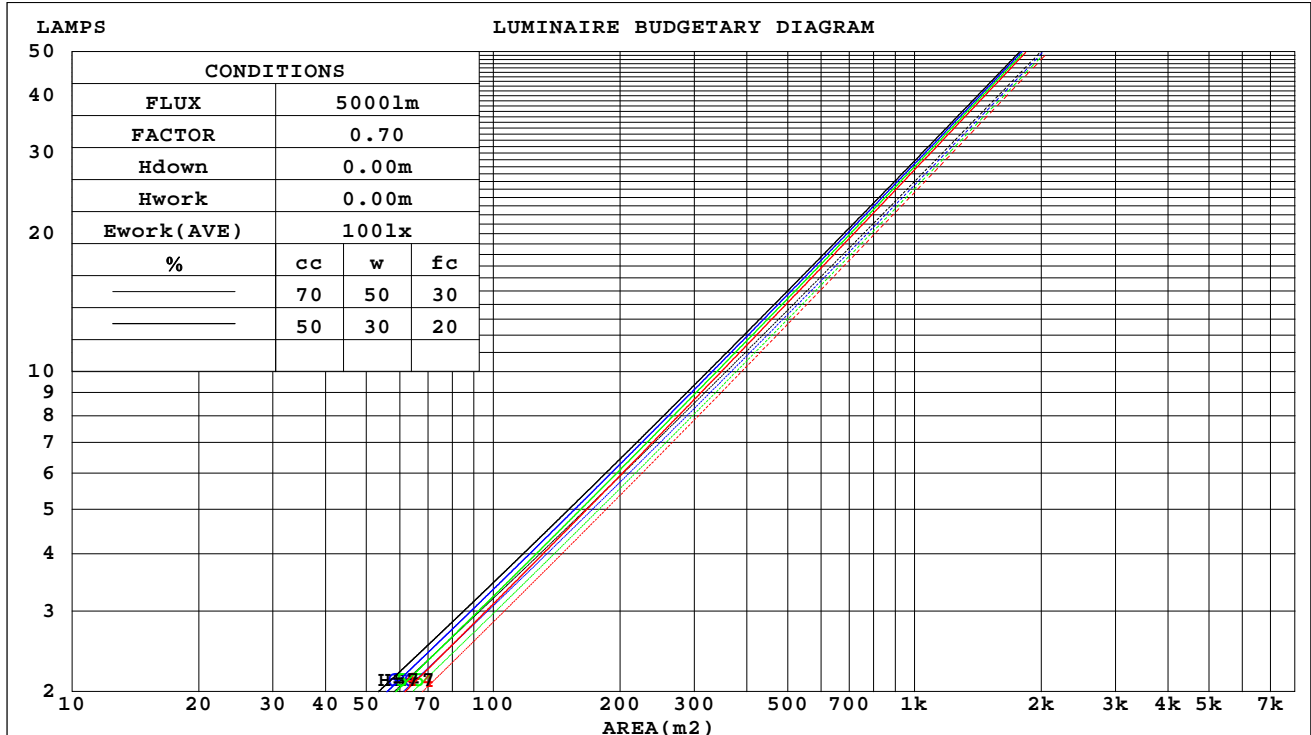
Range: 0 - 180DEG
Interval: 1.0DEG
Test System:EVERFINE GO-SPEX500_V1 SYSTEM V2.00.461
Humidity:65.0%
Test Distance:3.160m [K=1.0000]
Remarks: LAMP:BXRE-30G-11H-3A1-00-0-0 Ra:90
LENS:HLTJ00039 30R
DRIVER: LS-3-700 SIE 700mA
30minutes warm-up

CU AND LUMINAIRE BUDGETARY ESTIMATE DIAGRAM

Test:U:220.15V I:0.0234A P:3.0512W PF:0.5846 Freq:49.99Hz
Lamp Flux:112.449x1 lm

NAME: 2368.100Z	TYPE:	WEIGHT:
SPEC.: 3000K	DIM.:	SERIAL No.: 2507150470
MFR.: RISE	SUR.: 0.00011304m2	Shielding Angle:

cc	80%			70%			50%			30%			10%			0
w	50%	30%	10%	50%	30%	10%	50%	30%	10%	50%	30%	10%	50%	30%	10%	0
fc	20%			20%			20%			20%			20%			0
RCR	RCR:Room Cavity Ratio															



C Range: 0 - 360DEG
C Interval: 30.0DEG
Test Speed: HIGH
Temperature:25.3℃
Operators:zoe
Test Date:2025-7-15

Range: 0 - 180DEG
Interval: 1.0DEG
Test System:EVERFINE GO-SPEX500_V1 SYSTEM V2.00.461
Humidity:65.0%
Test Distance:3.160m [K=1.0000]
Remarks: LAMP:BXRE-30G-11H-3A1-00-0-0 Ra:90
LENS:HLTJ00039 30R
DRIVER: LS-3-700 SIE 700mA
30minutes warm-up

WEC AND CCEC

Test:U:220.15V I:0.0234A P:3.0512W PF:0.5846 Freq:49.99Hz Lamp Flux:112.449x1 lm		
NAME: 2368.100Z	TYPE:	WEIGHT:
SPEC.: 3000K	DIM.:	SERIAL No.: 2507150470
MFR.: RISE	SUR.: 0.00011304m2	Shielding Angle:

cc	80%			70%			50%			30%			10%			0
w	50%	30%	10%	50%	30%	10%	50%	30%	10%	50%	30%	10%	50%	30%	10%	0
fc	20%			20%			20%			20%			20%			0
RCR	RCR:Room Cavity Ratio Wall Exitance Coefficients(WEC)															
0.0																
1.0	.137	.078	.025	.130	.074	.024	.118	.068	.022	.107	.062	.020	.096	.056	.018	
2.0	.127	.070	.021	.122	.067	.021	.112	.062	.019	.102	.057	.018	.093	.053	.017	
3.0	.119	.063	.019	.114	.061	.018	.106	.057	.017	.098	.054	.016	.090	.050	.015	
4.0	.111	.058	.017	.108	.056	.017	.100	.053	.016	.094	.050	.015	.087	.048	.014	
5.0	.105	.053	.015	.102	.052	.015	.096	.050	.015	.090	.047	.014	.085	.045	.014	
6.0	.099	.050	.014	.097	.049	.014	.091	.047	.014	.086	.045	.013	.082	.043	.013	
7.0	.094	.047	.013	.092	.046	.013	.087	.044	.013	.083	.043	.012	.079	.041	.012	
8.0	.090	.044	.012	.088	.043	.012	.084	.042	.012	.080	.041	.012	.077	.039	.011	
9.0	.086	.042	.012	.084	.041	.012	.081	.040	.011	.077	.039	.011	.074	.038	.011	
10.0	.083	.040	.011	.081	.039	.011	.078	.038	.011	.075	.037	.011	.072	.036	.010	

cc	80%			70%			50%			30%			10%			0
w	50%	30%	10%	50%	30%	10%	50%	30%	10%	50%	30%	10%	50%	30%	10%	0
fc	20%			20%			20%			20%			20%			0
RCR	RCR:Room Cavity Ratio Ceiling Cavity Exitance Coefficients(CCEC)															
0.0	.190	.190	.190	.163	.163	.163	.111	.111	.111	.064	.064	.064	.020	.020	.020	
1.0	.168	.158	.148	.144	.135	.127	.099	.093	.088	.057	.054	.051	.018	.017	.017	
2.0	.150	.133	.118	.129	.114	.102	.088	.079	.071	.051	.046	.042	.016	.015	.014	
3.0	.135	.113	.096	.116	.098	.083	.080	.068	.058	.046	.040	.034	.015	.013	.011	
4.0	.123	.098	.079	.105	.085	.068	.073	.059	.048	.042	.035	.029	.013	.011	.009	
5.0	.112	.086	.066	.097	.074	.057	.066	.052	.040	.039	.030	.024	.012	.010	.008	
6.0	.104	.076	.056	.089	.065	.048	.061	.046	.034	.036	.027	.020	.011	.009	.007	
7.0	.096	.067	.047	.083	.058	.041	.057	.041	.029	.033	.024	.017	.011	.008	.006	
8.0	.090	.061	.041	.077	.053	.036	.053	.037	.025	.031	.022	.015	.010	.007	.005	
9.0	.084	.055	.036	.072	.048	.031	.050	.034	.022	.029	.020	.013	.009	.007	.004	
10.0	.079	.050	.031	.068	.044	.027	.047	.031	.019	.028	.018	.012	.009	.006	.004	

C Range: 0 - 360DEG
C Interval: 30.0DEG
Test Speed: HIGH
Temperature:25.3℃
Operators:zoe
Test Date:2025-7-15

Range: 0 - 180DEG
Interval: 1.0DEG
Test System:EVERFINE GO-SPEX500_V1 SYSTEM V2.00.461
Humidity:65.0%
Test Distance:3.160m [K=1.0000]
Remarks: LAMP:BXRE-30G-11H-3A1-00-0-0 Ra:90
LENS:HLTJ00039 30R
DRIVER: LS-3-700 SIE 700mA
30minutes warm-up

UGR(Unified Glare Rating) Table

Test:U:220.15V I:0.0234A P:3.0512W PF:0.5846 Freq:49.99Hz Lamp Flux:112.449x1 lm										
NAME: 2368.100Z					TYPE:			WEIGHT:		
SPEC.: 3000K					DIM.:			SERIAL No.: 2507150470		
MFR.: RISE					SUR.: 0.00011304m2			Shielding Angle:		
ceiling/cavity	0.7	0.7	0.5	0.5	0.3	0.7	0.7	0.5	0.5	0.3
walls	0.5	0.3	0.5	0.3	0.3	0.5	0.3	0.5	0.3	0.3
working plane	0.2	0.2	0.2	0.2	0.2	0.2	0.2	0.2	0.2	0.2
Room dimensions	Viewed crosswise					Viewed endwise				
x = 2H y = 2H	19.7	20.4	19.9	20.5	20.7	19.1	19.8	19.3	19.9	20.1
3H	19.6	20.2	19.8	20.4	20.6	19.0	19.6	19.2	19.8	20.0
4H	19.5	20.1	19.8	20.3	20.5	18.9	19.5	19.2	19.7	19.9
6H	19.4	20.0	19.7	20.2	20.5	18.8	19.4	19.1	19.6	19.9
8H	19.4	19.9	19.7	20.2	20.4	18.8	19.3	19.1	19.6	19.8
12H	19.3	19.9	19.7	20.1	20.4	18.8	19.3	19.1	19.5	19.8
4H 2H	19.6	20.2	19.8	20.4	20.6	19.0	19.6	19.3	19.8	20.0
3H	19.4	19.9	19.7	20.2	20.5	18.9	19.4	19.2	19.6	19.9
4H	19.3	19.8	19.7	20.1	20.4	18.8	19.2	19.1	19.5	19.8
6H	19.2	19.6	19.6	20.0	20.3	18.7	19.1	19.0	19.4	19.7
8H	19.2	19.6	19.6	19.9	20.3	18.6	19.0	19.0	19.3	19.7
12H	19.1	19.5	19.5	19.8	20.2	18.5	18.9	18.9	19.3	19.7
8H 4H	19.2	19.6	19.6	19.9	20.3	18.6	19.0	19.0	19.3	19.7
6H	19.1	19.4	19.5	19.8	20.2	18.5	18.8	18.9	19.2	19.6
8H	19.0	19.3	19.4	19.7	20.1	18.4	18.7	18.9	19.1	19.6
12H	18.9	19.2	19.4	19.6	20.1	18.4	18.6	18.8	19.0	19.5
12H 4H	19.1	19.5	19.5	19.8	20.2	18.5	18.9	19.0	19.3	19.7
6H	19.0	19.3	19.4	19.7	20.1	18.4	18.7	18.9	19.1	19.6
8H	18.9	19.2	19.4	19.6	20.1	18.4	18.6	18.8	19.0	19.5
Variations with the observer position at spacings(CIE Pub.117):										
S = 1.0H	+ 2.5 / - 4.6					+ 2.5 / - 5.1				
1.5H	+ 3.6 / - 2.7					+ 3.5 / - 2.9				
2.0H	+ 3.8 / - 8.9					+ 3.7 / - 9.1				

CIE Pub.117, 112.4 lm Total Lamp Luminous Flux Correct (8log(F/F0) = -7.6)
Area: 0.00011304 m2

C Range: 0 - 360DEG
C Interval: 30.0DEG
Test Speed: HIGH
Temperature:25.3℃
Operators:zoe
Test Date:2025-7-15

Range: 0 - 180DEG
Interval: 1.0DEG
Test System:EVERFINE GO-SPEX500_V1 SYSTEM V2.00.461
Humidity:65.0%
Test Distance:3.160m [K=1.0000]
Remarks: LAMP:BXRE-30G-11H-3A1-00-0-0 Ra:90
LENS:HLTJ00039 30R
DRIVER: LS-3-700 SIE 700mA
30minutes warm-up

UTILIZATION FACTORS TABLE

Test:U:220.15V I:0.0234A P:3.0512W PF:0.5846 Freq:49.99Hz Lamp Flux:112.449x1 lm		
NAME: 2368.100Z	TYPE:	WEIGHT:
SPEC.: 3000K	DIM.:	SERIAL No.: 2507150470
MFR.: RISE	SUR.: 0.00011304m2	Shielding Angle:

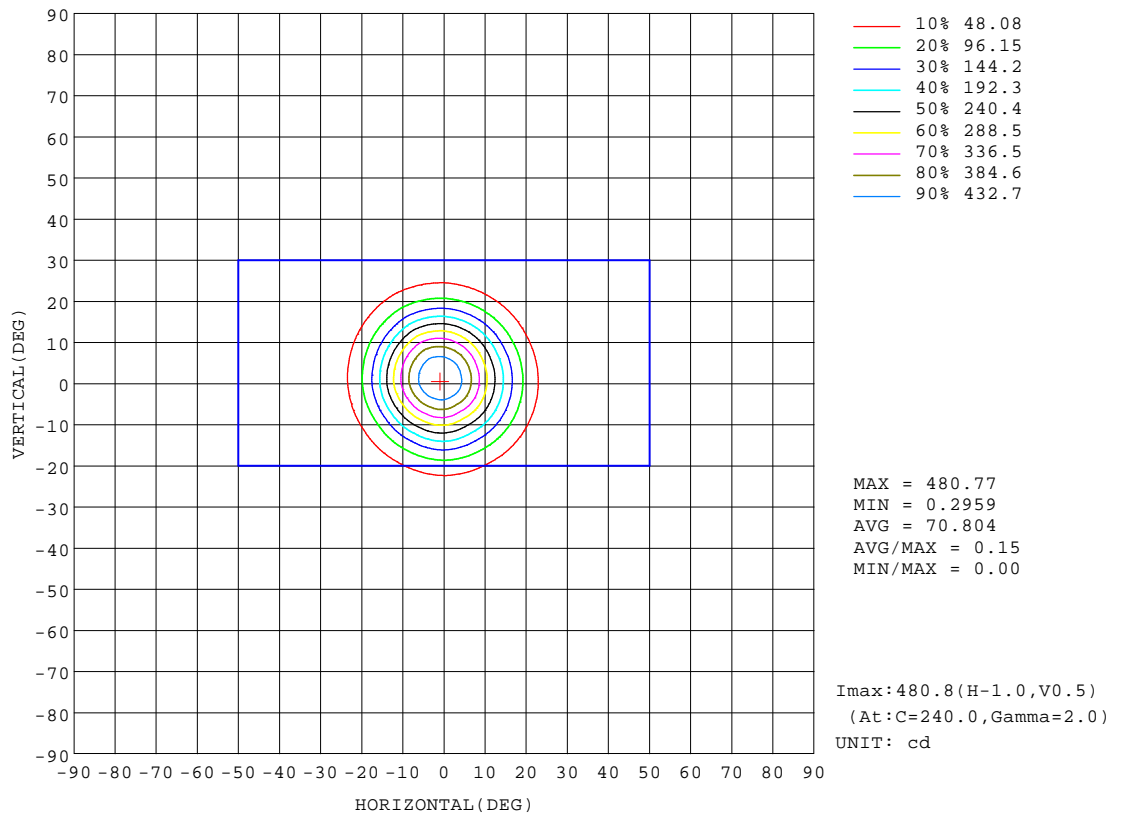
REFLECTANCE										
Ceiling	0.8	0.8	0.8	0.7	0.7	0.7	0.5	0.5	0.5	0
Walls	0.7	0.5	0.3	0.7	0.5	0.3	0.7	0.5	0.3	0
Working plane	0.2	0.2	0.2	0.2	0.2	0.2	0.2	0.2	0.2	0
ROOM INDEX	UTILIZATION FACTORS(PERCENT) $k(RI) \times RCR = 5$									
k = 0.60	91	85	81	90	85	81	89	84	81	78
0.80	98	92	89	97	92	89	96	92	89	85
1.00	101	96	93	101	96	93	99	96	92	89
1.25	105	100	97	104	100	97	102	99	96	92
1.50	108	103	100	106	103	100	104	101	99	95
2.00	110	106	103	108	105	102	106	103	101	96
2.50	111	108	105	110	107	104	107	104	102	97
3.00	113	110	107	111	108	106	108	105	104	98
4.00	114	112	110	112	110	109	109	107	106	99
5.00	116	114	112	114	112	110	110	108	107	100
ROOM INDEX	UF(total)									Direct
According to DIN EN 13032-2 2004			Suspended					SHRNOM = 1.25		

C Range: 0 - 360DEG
C Interval: 30.0DEG
Test Speed: HIGH
Temperature:25.3℃
Operators:zoe
Test Date:2025-7-15

Range: 0 - 180DEG
Interval: 1.0DEG
Test System:EVERFINE GO-SPEX500_V1 SYSTEM V2.00.461
Humidity:65.0%
Test Distance:3.160m [K=1.0000]
Remarks: LAMP:BXRE-30G-11H-3A1-00-0-0 Ra:90
LENS:HLTJ00039 30R
DRIVER: LS-3-700 SIE 700mA
30minutes warm-up

ISOCANDELA DIAGRAM

Test:U:220.15V I:0.0234A P:3.0512W PF:0.5846 Freq:49.99Hz Lamp Flux:112.449x1 lm		
NAME: 2368.100Z	TYPE:	WEIGHT:
SPEC.: 3000K	DIM.:	SERIAL No.: 2507150470
MFR.: RISE	SUR.: 0.00011304m2	Shielding Angle:

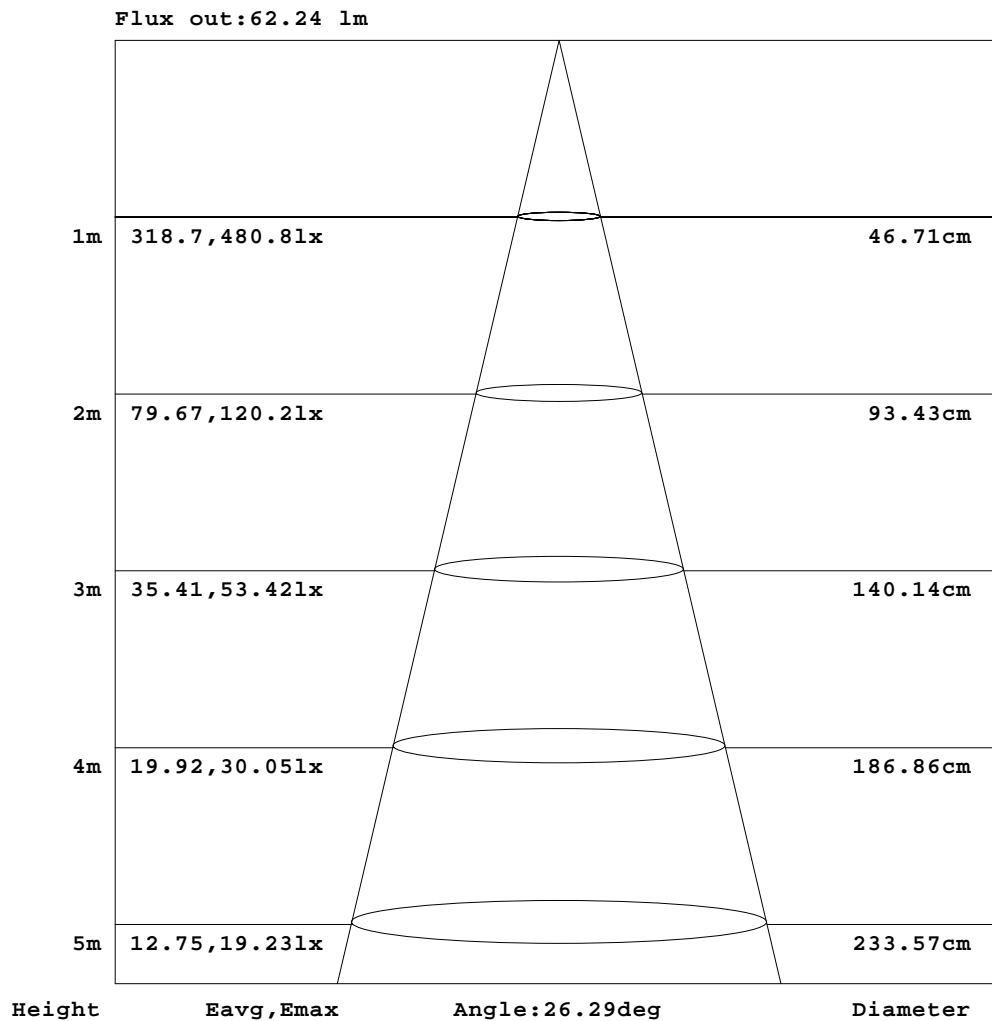


C Range: 0 - 360DEG
C Interval: 30.0DEG
Test Speed: HIGH
Temperature: 25.3 °C
Operators: zoe
Test Date: 2025-7-15

Range: 0 - 180DEG
Interval: 1.0DEG
Test System: EVERFINE GO-SPEX500_V1 SYSTEM V2.00.461
Humidity: 65.0%
Test Distance: 3.160m [K=1.0000]
Remarks: LAMP: BXRE-30G-11H-3A1-00-0-0 Ra: 90
LENS: HLTJ00039 30R
DRIVER: LS-3-700 SIE 700mA
30minutes warm-up

AAI Figure

Test:U:220.15V I:0.0234A P:3.0512W PF:0.5846 Freq:49.99Hz Lamp Flux:112.449x1 lm		
NAME: 2368.100Z	TYPE:	WEIGHT:
SPEC.: 3000K	DIM.:	SERIAL No.: 2507150470
MFR.: RISE	SUR.: 0.00011304m2	Shielding Angle:



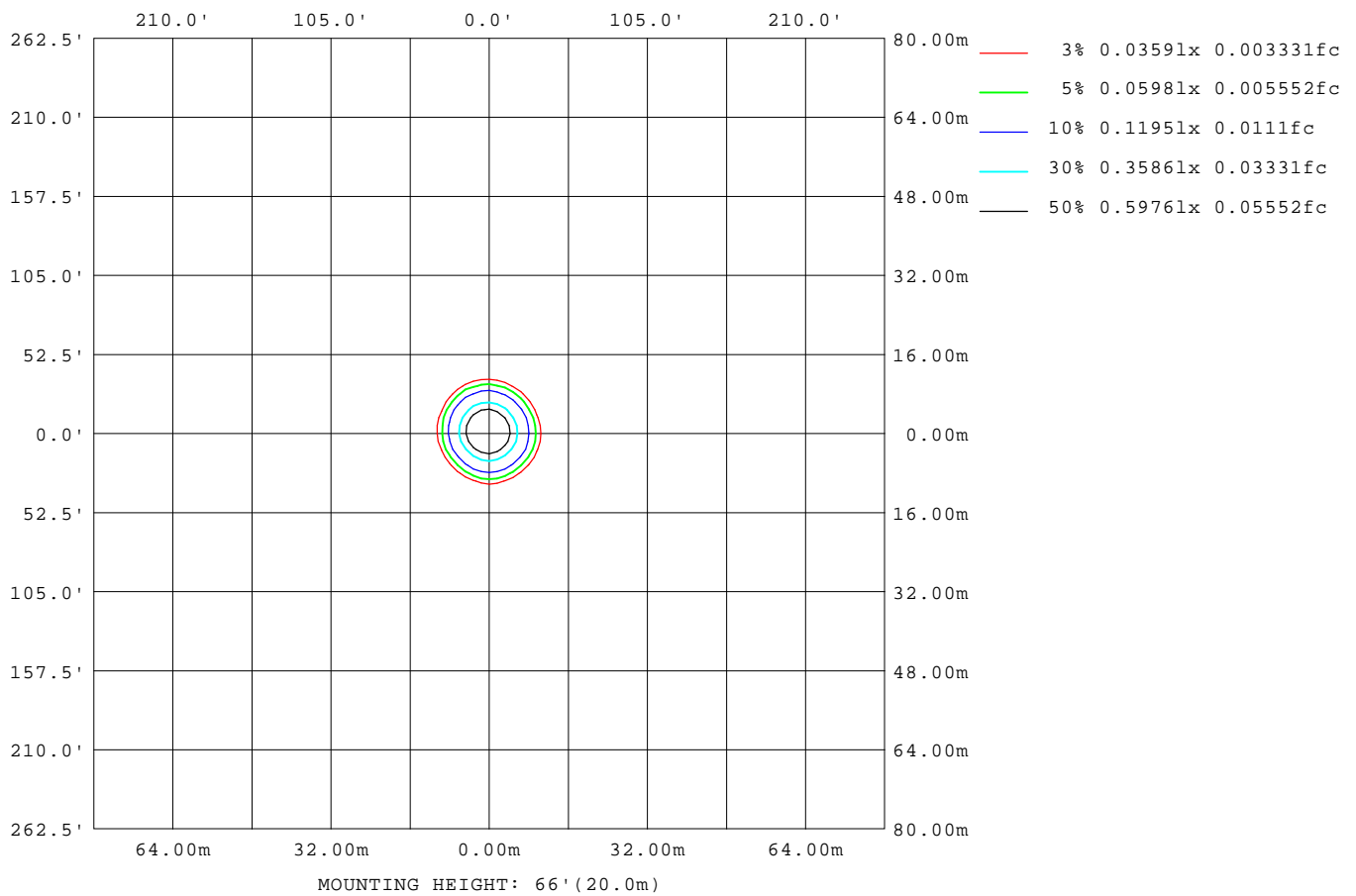
Note: The Curves indicate the illuminated area and the average illumination when the luminaire is at different distance.

C Range: 0 - 360DEG
C Interval: 30.0DEG
Test Speed: HIGH
Temperature: 25.3 °C
Operators: zoe
Test Date: 2025-7-15

Range: 0 - 180DEG
Interval: 1.0DEG
Test System: EVERFINE GO-SPEX500_V1 SYSTEM V2.00.461
Humidity: 65.0%
Test Distance: 3.160m [K=1.0000]
Remarks: LAMP: BXRE-30G-11H-3A1-00-0-0 Ra: 90
LENS: HLTJ00039 30R
DRIVER: LS-3-700 SIE 700mA
30minutes warm-up

ISOLUX DIAGRAM

Test:U:220.15V I:0.0234A P:3.0512W PF:0.5846 Freq:49.99Hz Lamp Flux:112.449x1 lm		
NAME: 2368.100Z	TYPE:	WEIGHT:
SPEC.: 3000K	DIM.:	SERIAL No.: 2507150470
MFR.: RISE	SUR.: 0.00011304m2	Shielding Angle:



C Range: 0 - 360DEG
C Interval: 30.0DEG
Test Speed: HIGH
Temperature:25.3°C
Operators:zoe
Test Date:2025-7-15

Range: 0 - 180DEG
Interval: 1.0DEG
Test System:EVERFINE GO-SPEX500_V1 SYSTEM V2.00.461
Humidity:65.0%
Test Distance:3.160m [K=1.0000]
Remarks: LAMP:BXRE-30G-11H-3A1-00-0-0 Ra:90
LENS:HLTJ00039 30R
DRIVER: LS-3-700 SIE 700mA
30minutes warm-up

LED Avg.L Report

Test:U:220.15V I:0.0234A P:3.0512W PF:0.5846 Freq:49.99Hz Lamp Flux:112.449x1 lm		
NAME: 2368.100Z	TYPE:	WEIGHT:
SPEC.: 3000K	DIM.:	SERIAL No.: 2507150470
MFR.: RISE	SUR.: 0.00011304m2	Shielding Angle:

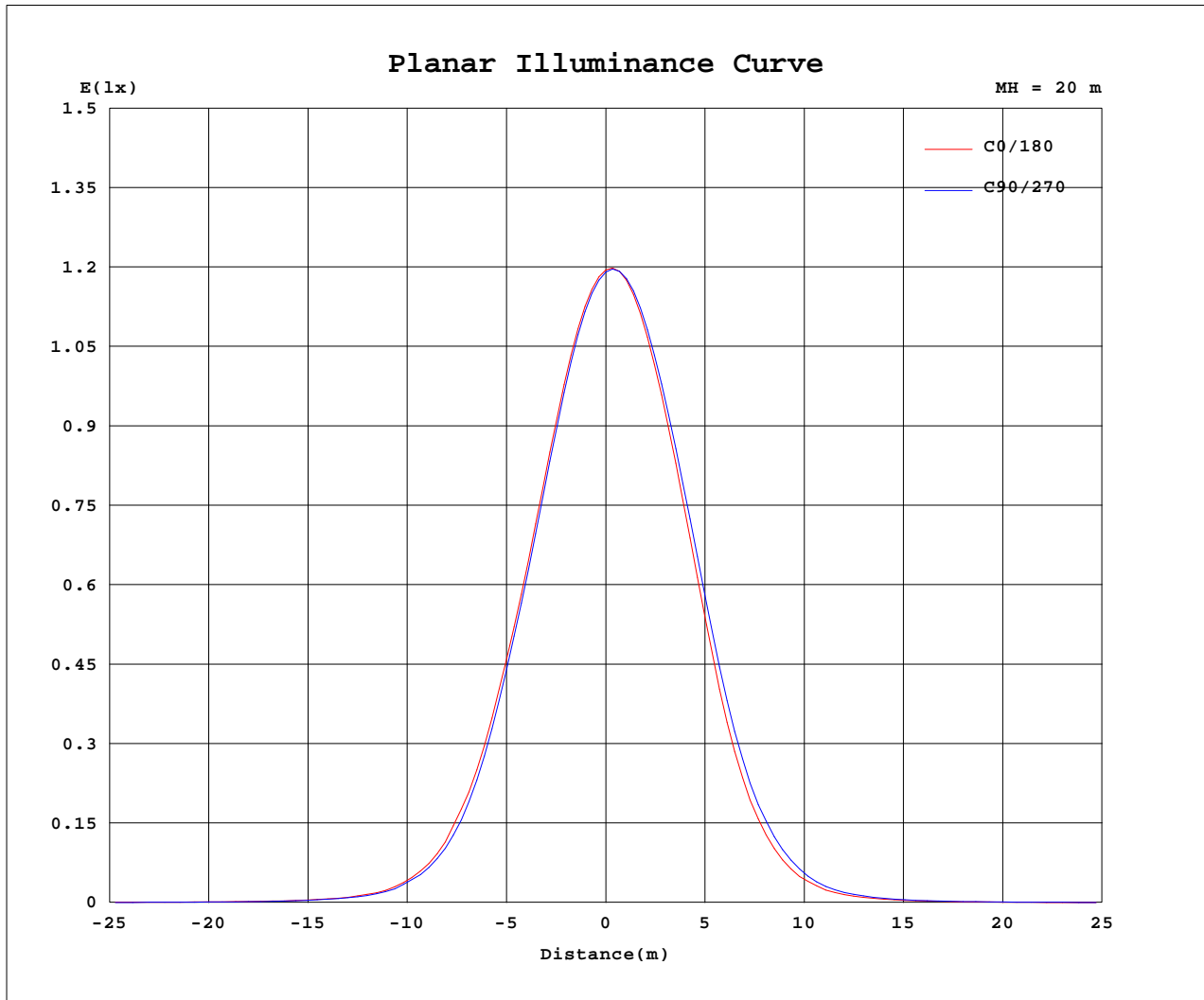
AvgL	cd/m2
L_0~180(65)av	1201
L_0~180(75)av	104
L_0~180(85)av	0
L_90~270(65)av	1167
L_90~270(75)av	87
L_90~270(85)av	0
L_45(65)av	1168
L_45(75)av	62
L_45(85)av	0

Standard: GB/T 29293-2012

C Range: 0 - 360DEG
C Interval: 30.0DEG
Test Speed: HIGH
Temperature:25.3℃
Operators:zoe
Test Date:2025-7-15

Range: 0 - 180DEG
Interval: 1.0DEG
Test System:EVERFINE GO-SPEX500_V1 SYSTEM V2.00.461
Humidity:65.0%
Test Distance:3.160m [K=1.0000]
Remarks: LAMP:BXRE-30G-11H-3A1-00-0-0 Ra:90
LENS:HLTJ00039 30R
DRIVER: LS-3-700 SIE 700mA
30minutes warm-up

Planar Illuminance Curve



C Range: 0 - 360DEG
 C Interval: 30.0DEG
 Test Speed: HIGH
 Temperature: 25.3 °C
 Operators: zoe
 Test Date: 2025-7-15

Range: 0 - 180DEG
 Interval: 1.0DEG
 Test System: EVERFINE GO-SPEX500_V1 SYSTEM V2.00.461
 Humidity: 65.0%
 Test Distance: 3.160m [K=1.0000]
 Remarks: LAMP: BXRE-30G-11H-3A1-00-0-0 Ra: 90
 LENS: HLTJ00039 30R
 DRIVER: LS-3-700 SIE 700mA
 30minutes warm-up



LUMINOUS DISTRIBUTION INTENSITY DATA

Test:U:220.15V I:0.0234A P:3.0512W PF:0.5846 Freq:49.99Hz Lamp Flux:112.449x1 lm		
NAME: 2368.100Z	TYPE:	WEIGHT:
SPEC.: 3000K	DIM.:	SERIAL No.: 2507150470
MFR.: RISE	SUR.: 0.00011304m2	Shielding Angle:

Table--1

UNIT: cd

C(DEG) (DEG)	0	30	60	90	120	150	180	210	240	270	300	330						
0	477	477	477	477	477	477	477	477	477	477	477	477						
5	417	412	407	413	421	435	449	456	462	455	444	429						
10	299	289	281	292	299	319	346	361	373	359	338	314						
15	179	170	162	170	170	182	209	223	239	227	209	188						
20	85.0	77.4	74.1	75.4	74.4	77.0	93.2	103	114	109	97.2	88.6						
25	32.0	29.5	27.1	28.5	26.1	27.6	34.1	39.5	45.1	43.2	36.8	32.8						
30	11.5	11.0	10.3	10.3	9.82	9.85	11.7	13.8	15.9	15.0	13.0	11.6						
35	5.01	4.92	4.76	4.59	4.23	4.29	4.76	5.54	6.27	6.03	5.41	4.96						
40	2.59	2.59	2.47	2.31	2.13	2.06	2.17	2.47	2.76	2.75	2.57	2.50						
45	1.57	1.54	1.41	1.32	1.19	1.06	1.08	1.26	1.41	1.46	1.40	1.49						
50	1.04	0.99	0.88	0.84	0.71	0.57	0.57	0.71	0.80	0.85	0.84	1.01						
55	0.65	0.63	0.55	0.54	0.42	0.31	0.30	0.38	0.44	0.50	0.51	0.65						
60	0.30	0.31	0.27	0.24	0.17	0.12	0.11	0.12	0.15	0.19	0.23	0.29						
65	0.07	0.07	0.07	0.07	0.06	0.05	0.05	0.04	0.04	0.05	0.05	0.06						
70	0.03	0.04	0.04	0.03	0.02	0.02	0.01	0.01	0.01	0.02	0.02	0.03						
75	0.01	0.01	0.00	0.00	0.00	0.00	0.00	0.00	0.00	0.00	0.00	0.00						
80	0.00	0.00	0.00	0.00	0.00	0.00	0.00	0.00	0.00	0.00	0.00	0.00						
85	0.00	0.00	0.00	0.00	0.00	0.00	0.00	0.00	0.00	0.00	0.00	0.00						
90	0.00	0.00	0.00	0.00	0.00	0.00	0.00	0.00	0.00	0.00	0.00	0.00						
95	0.00	0.00	0.00	0.00	0.00	0.00	0.00	0.00	0.00	0.00	0.00	0.00						
100	0.00	0.00	0.00	0.00	0.00	0.00	0.00	0.00	0.00	0.00	0.00	0.00						
105	0.00	0.00	0.00	0.00	0.00	0.00	0.00	0.00	0.00	0.00	0.00	0.00						
110	0.00	0.00	0.00	0.00	0.00	0.00	0.00	0.00	0.00	0.00	0.00	0.00						
115	0.00	0.00	0.00	0.00	0.00	0.00	0.00	0.00	0.00	0.00	0.00	0.00						
120	0.00	0.00	0.00	0.00	0.00	0.00	0.00	0.00	0.00	0.00	0.00	0.00						
125	0.00	0.00	0.00	0.00	0.00	0.00	0.00	0.00	0.00	0.00	0.00	0.00						
130	0.00	0.00	0.00	0.00	0.00	0.00	0.00	0.00	0.00	0.00	0.00	0.00						
135	0.00	0.00	0.00	0.00	0.00	0.00	0.00	0.00	0.00	0.00	0.00	0.00						
140	0.00	0.00	0.00	0.00	0.00	0.00	0.00	0.00	0.00	0.00	0.00	0.00						
145	0.00	0.00	0.00	0.00	0.00	0.00	0.00	0.00	0.00	0.00	0.00	0.00						
150	0.00	0.00	0.00	0.00	0.00	0.00	0.00	0.00	0.00	0.00	0.00	0.00						
155	0.00	0.00	0.00	0.00	0.00	0.00	0.00	0.00	0.00	0.00	0.00	0.00						
160	0.00	0.00	0.00	0.00	0.00	0.00	0.00	0.00	0.00	0.00	0.00	0.00						
165	0.00	0.00	0.00	0.00	0.00	0.00	0.00	0.00	0.00	0.00	0.00	0.00						
170	0.00	0.00	0.00	0.00	0.00	0.00	0.00	0.00	0.00	0.00	0.00	0.00						
175	0.00	0.00	0.00	0.00	0.00	0.00	0.00	0.00	0.00	0.00	0.00	0.00						
180	0.00	0.00	0.00	0.00	0.00	0.00	0.00	0.00	0.00	0.00	0.00	0.00						

C Range: 0 - 360DEG
C Interval: 30.0DEG
Test Speed: HIGH
Temperature:25.3℃
Operators:zoe
Test Date:2025-7-15

Range: 0 - 180DEG
Interval: 1.0DEG
Test System:EVERFINE GO-SPEX500_V1 SYSTEM V2.00.461
Humidity:65.0%
Test Distance:3.160m [K=1.0000]
Remarks: LAMP:BXRE-30G-11H-3A1-00-0-0 Ra:90
LENS:HLTJ00039 30R
DRIVER: LS-3-700 SIE 700mA
30minutes warm-up